



How to Bring Your Pets to Japan

Pets Transfer

Bringing your furry friends to Japan.

Dogs, cats and some other animals must be in quarantine to comply with the Rabies Prevention Law and in the case of dogs, the Domestic Animal Infectious Diseases Control Law. There are specific regulations that must be followed when bringing your pets to Japan, and you will require several certificates.

If there are any missing documents, your pet could be held, so it is important that each requirement is in place in advance. The quarantine can be as long as 180 days, with the purpose of ensuring your pet does not have any infectious diseases that could affect humans. The expense for this quarantine will be charged to you, so it is important that your certification is in order.

Yamato Transport USA advises customers to prepare for the quarantine exam as early as possible, prior to your departure to Japan. Plan ahead, as it could take 8 to 10 months before the process is complete and you are allowed to enter Japan with your pet.

Click here for more information on all the steps of the procedure.

<http://www.maff.go.jp/aqs/english/index.html>



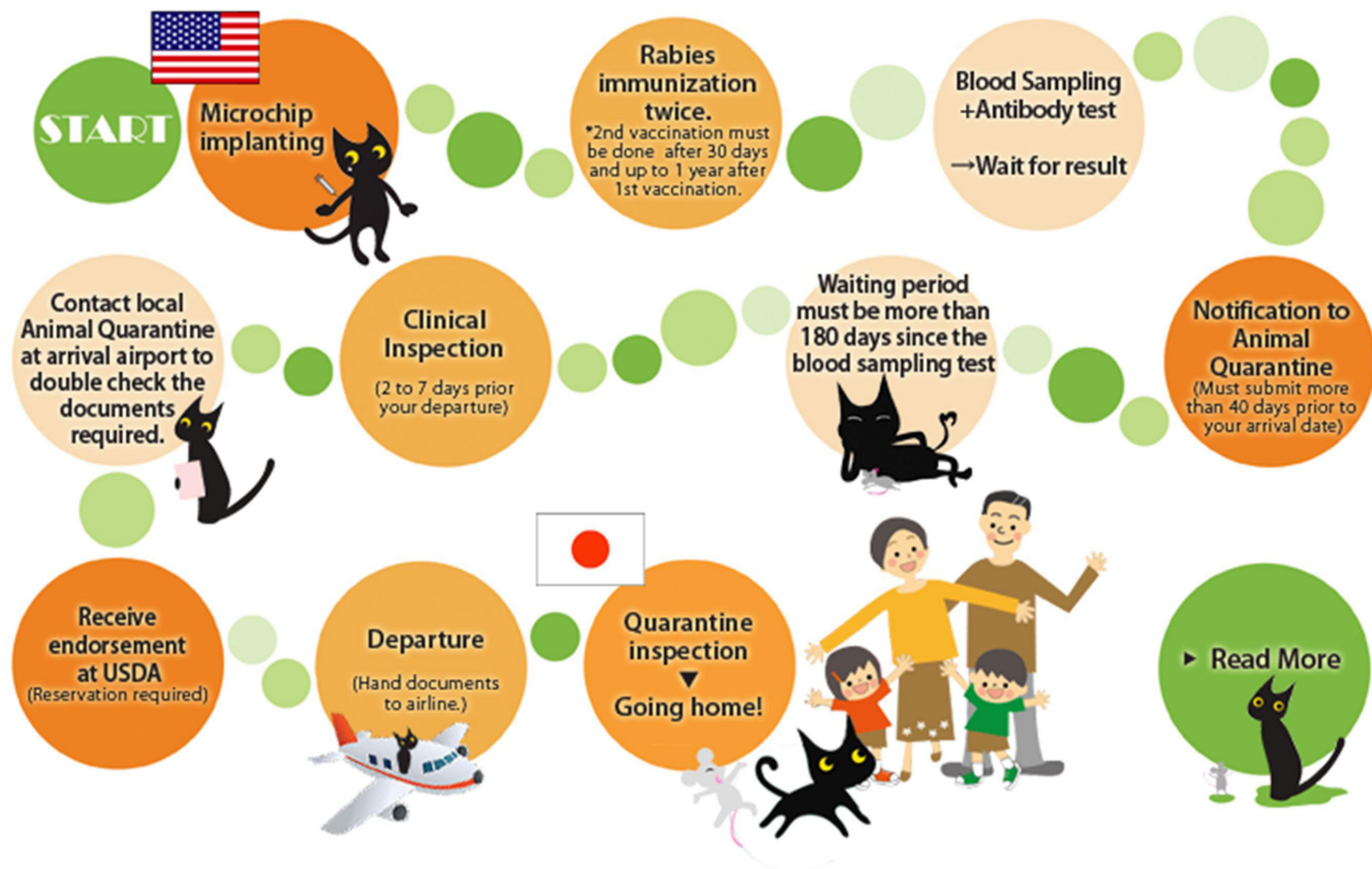
Important Tips to Know Early

- Get prepared at least 8 months prior to your departure so your pet can arrive in Japan with you.
- Get the microchip implanted as required.
- Get the two Rabies immunizations required, blood samples and the antibody test as required.
- After the blood sample is taken, there is a 180 day wait that is required before your pet can go to Japan.
- Submit advanced notification to the animal quarantine at the airport where you will arrive at least 40 days before your pet will arrive in Japan.
- Your pet must have a clinical inspection 2 – 7 days prior to the departure date, with all the necessary documents fully filled out and signed by the veterinarian.
- Some documents require an endorsement at the USDA office, and you will need to make a reservation for this endorsement.



Please plan ahead about 8 to 10 months before your departure.

(Caution: It may take longer depending on the health status of your pet.)



1 Microchip Implanting



All dogs and cats entering to Japan must be identified by microchip. Therefore you need to have your pet microchip implanted to get things started.

Microchip will be implanted into the neck or shoulder part by using a tool like a syringe. Please ask details to your veterinarian.

Japanese Animal Quarantine recommends microchip of ISO11784 or 11785. If not these, it is important to have microchip that Animal Quarantine can read the identifying number. Please contact the local animal quarantine at your arrival airport to check whether they have the scanner for your pet's microchip. If they don't have an appropriate one, the owner may have to buy and bring in the scanner.

Following two microchip are the most commonly used in U.S. (as of 2012)

Home Again (Destron)

AVID FriendChip (AVID)

Please contact Animal Quarantine at your arrival airport whether they have the scanner or not.

2-1 Rabies immunization twice



After implanting microchip, your pet needs to take Anti-Rabies Vaccination twice. It is necessary to take 2nd vaccination after 30 days of 1st vaccination. Please ask your veterinarian that he/she uses anti-rabies vaccination of "Killed Vaccine" or "Recombinant Vaccine"(effective as of April 15th, 2010).

- Only "Killed Vaccine" or "Recombinant Vaccine" are approved by World Organization of Animal Health(OIE)'s standard.
- When you used "Recombinant Vaccine", you must report to Animal Quarantine the vaccine maker name and product name.
- The vaccination before implanting microchip, or before 90 day-old will NOT be considered as vaccinated for the process.
- AntiRabies vaccination's valid period are various. Please ask your veterinarian beforehand.

Example 1.)

【Oct 3, 2011】 1st AntiRabies Vaccination (valid for 1 year)

【Sep 3, 2012】 2nd AntiRabies Vaccination (valid for 3 year)

Must be BEFORE blood sampling and antibody test

*In this case, vaccinations are effective because the 2nd shot was done after 30days from 1st shot and the 1st shot was still valid at the same time.

Example 2.)

【Feb 1, 2009】 1st AntiRabies Vaccination (valid for 3 year)

【Feb 9, 2012】 2nd AntiRabies Vaccination (valid for 3 year)

>>1st vaccination has already expired so this will be "1st vaccination".

【Mar15, 2012】 2nd AntiRabies Vaccination

>>This is counted as 2nd because it's been more than 30days since its 1st shot.

3 Blood sampling & Antibody test

After taking AntiRabies vaccination twice, your pet will have Antibody. The test result should show the antibody value over 0.5 IU/ml which requires to be called "immunized".

Please contact your veterinarian for this procedure. The blood sample taken will be sent to the laboratory where Japanese Ministry of Agriculture, Forestry and Fisheries (MAFF) approves.

The blood sampling must be done 180 day prior to the departure date. If your departure date is less than 180 days prior, your pet must be held at Animal Quarantine Center at the arrival airport until 180 days pass. (The blood sampled date will be the first day of waiting period.)

Following laboratory is the only one(where the veterinarians send samples)designated by Japanese Ministry of Agriculture, Forestry and Fisheries. (As of 2012)

Kansas State University Rabies Laboratory

2005 Research Park Circle, Manhattan, KS 66502

Tel: 785-532-4483 Fax: 785-532-4474

Email:rabies@vet.k-state.edu Web: www.vet.k-state.edu/rabies

Please download necessary documents here and bring them to the veterinarian.

The documents need to be filled out by your vet who did blood sampling and need to be endorsed by U.S. government at the end.

4 Notification to Animal Quarantine Service

Please submit notification form (with the arrival date, detail of your pet, contact info, etc) to the local animal quarantine at the arrival airport by 40 days prior to your arrival.

You can submit it by Mail, Fax or Online.

If you don't have the fixed arrival date yet, please submit the approximate date of arrival as you can change it later. Once you fix the date, please submit the Modification Notice Form to the animal quarantine.



Application form

- for Dogs
- for Cats
- modification notice

download form
↓↓↓




Quick & Easy
ANIPAS
Online application system
[Click here for detail](#)

Once the application has been received, they will issue "Approval of import inspection of animals"(Receipt). The number on this receipt will be necessary when you fill out the documents to submit (Form A/Form C) and also needed for the import inspection. You will have to show this approval at the time of flight check-in.

5

Waiting Period (180 days)/ Document Preparation

In order to reduce the detention period, the dog or cat is advised to arrive in Japan more than 180 days and less than 2 years from the blood sampling date as described in the previous section. If the animal arrives in Japan before the passage of 180 days since the date of the blood sample, detention will be required for the insufficient number of days at an Animal Quarantine Station.

During this waiting period, it is recommended for you to prepare the necessary documents for animal quarantine, flight booking and making a final clinical inspection appointment with your veterinarian.

Please prepare necessary documents beforehand.

1. Form A (Recommended format of Animal quarantine)

2. Form C 1/3, 2/3, 3/3 Pages (Recommended format of Animal quarantine)

Form C will be filled out and signed by the veterinarian at the final clinical inspection, however, you can fill out the data already fixed beforehand.

3. Import inspection application form (You must submit this form immediately after arrival at the airport)

[Import inspection application form](#)

動物検疫所



Animal Quarantine Service

For flight reservation, the condition for transport varies with respect to the airline. (The size of cage, price, etc) Some types of dogs are not suited to transport or limited to transport for long flights so please contact your airline to make sure their conditions.

Toilet training and limited meal training beforehand to prepare the long flight will do good for your pets.



Buying bags and cages for the transport earlier would be a good practice for your pet to sleep and stay there.

6 Clinical inspection before departure

Before departure (2-7 days or less before boarding if possible), have a veterinarian give the pet a clinical inspection to confirm that it does not have or is not suspected of having rabies (in case of dogs, rabies and leptospirosis)

Please have the veterinarian fill out and sign the form. [Download form A and Form C](#)

Form A --- Pet owner can fill out. Form C --- Will be filled out and signed by the vet. You need to obtain "Endorsement" by USDA for both form A and C after filled and signed by vet. Please double check with the vet that there's no flaw before obtaining endorsement.

At this clinical inspection, it is recommended to take any immunizations for diseases other than rabies and parasite treatment (dates of treatments, address and name of the veterinarian who administered the treatments, vaccine effectiveness period, product names). Please ask your vet for further details. (Any other treatment must be filled out in Form C)

Animal quarantine at the arrival airport can give you a final check and instruction through Fax or Email so please do contact them and send them all the documents to double check BEFORE you obtain endorsement by USDA.

7 Submitting documents / Import quarantine

In order to make arrival procedures go smoothly, 2 to 4 days before arrival in Japan, contact the local Animal Quarantine Station over the scheduled arrival airport by telephone, fax or e-mail and provide the advance notification : Receipt number, Flight number, Scheduled arrival airport and Scheduled arrival time information.

Required Documents for all the pet importers

Original Certificates (Form A, Form C) with an official stamp by the exporting country. (=with endorsement)

Original Rabies serological test results (FAVN REPORT FORM/ Issued by Kansas State University laboratories.)

Original Approval of import inspection of animals (Issued by animal quarantine at the arrival airport.)

8 Obtaining Endorsement (Appointment Required)

After the health inspection, when all the documents including FORM A and FORM C are ready, please make an appointment with USDA to obtain endorsement at the USDA office nearby.

[Check here](#) the nearest USDA (United State Department of Agriculture) office.

Documents which require endorsement by USDA

- Certificates issued by exporting country's governmental organization (Recommended FORM A, FORM C)
- Rabies serological test results

9 Signing consent to the airline

On the departure day at the airport, you need to sign the consent in regards to pet transport for the airline upon check-in. At that time, you might be asked by the airline to submit the Approval of import inspection of animals so please bring the copy just in case.

Once your pet took the exporting inspection at the departure airport, it cannot be taken out from the crate until it arrives in Japan so please take your pet for a walk for the toilet beforehand.

10 Submit "Import inspection application form" to the Animal quarantine upon arrival

Following documents are required to hand in on your arrival at the airport in Japan.

*You can also submit these documents online by using [online system ANIPAS](#).

1. Import inspection application form
2. Original Certificates (Form A, Form C)
issued by the exporting country's institution or with its endorsement.
3. Original Rabies serological test results
(FAVN REPORT FORM/ Issued by Kansas State University laboratories.)
4. Original Approval of import inspection of animals
(Issued by animal quarantine at the arrival airport.)

Once it's inspected and confirmed at the quarantine, the inspection should be done and you can go home with your pet.