

MOVING LESSON Contents

- STEP 01 Request a quote from Yamato Transport USA
- STEP 02 Categorize your personal goods into three categories
- STEP 03 Make arrangements for your pets if you plan to bring them to Japan
- STEP 04 The difference between air and sea transport
- STEP 05 We visit your home and give you an onsite quote
- STEP 06 You get your shipping materials delivered to your home
- STEP 07 Preparing your shipping boxes
- STEP 08 Packing fragile items
- STEP 09 Packing your items in the boxes
- STEP 10 How to make the move EASY on you and your family
- Common Mistakes
- STEP 11 Pick up day
- STEP 12 A safe trip!
- STEP 13 Your personal items are shipped by air or sea
- STEP 14 Your items are delivered
- Final



MOVING LESSON STEP 01

The first step is to request a quote from Yamato USA. To make it easier for you, we recommend 2 or 3 months prior to your move.



Full Service Moving
Rakuraku Pack
or
Small Moving Service
Tanshin Plan



MOVING LESSON STEP 02

Categorizing your items makes it easier.

- 1.What you will bring to Japan
- 2.What you will give away or sell
- 3.What you will throw away

Bringing to Japan



Give Away or Sell



Throw Away



In Japan the voltage is 100V – in the US it is 110V. You will probably need the right adaptor for your electronic goods.

MOVING LESSON STEP 03



There are a few options for bringing your pet overseas.

Prepare 8 months prior to your departure, it's a long process!



It could be longer if your pet has health problems. It is best to plan ahead.



MOVING LESSON STEP 04

Air or Sea Transportation? Get the facts.

Air transportation is faster, but costs more.

Bring the items you will need when you arrive, such as clothing, pots and pans, electronics and other important items you will need right away.



Ocean Transport is slower but costs far less.

Send your heavier goods such as beds, furniture and other large items by ocean transport.



Use both air and ocean transport for your move, it is convenient and affordable.

MOVING LESSON STEP 05

In Home Evaluation and Quote.

We come to you and we discuss the following:

1. Confirm your pick up date.
2. Confirm the delivery address.
3. List and review all items to be shipped within your home.
4. Confirm any heavier goods such as pianos that will require special handling.

Our professional movers will visit your home and review the things you want shipped, and give you an accurate quote.
Please ask us any questions while we are there!



Please be advised that we must inspect all of the rooms containing items to be shipped so we can calculate an accurate price for you!

MOVING LESSON STEP 06

We deliver your shipping materials.

We will deliver all the shipping material you need to your home, prior to the pick-up date. We can answer your questions about packing valuables and fragile items during our visit!



We offer various sized boxes for your packing. Contact Yamato about the details.

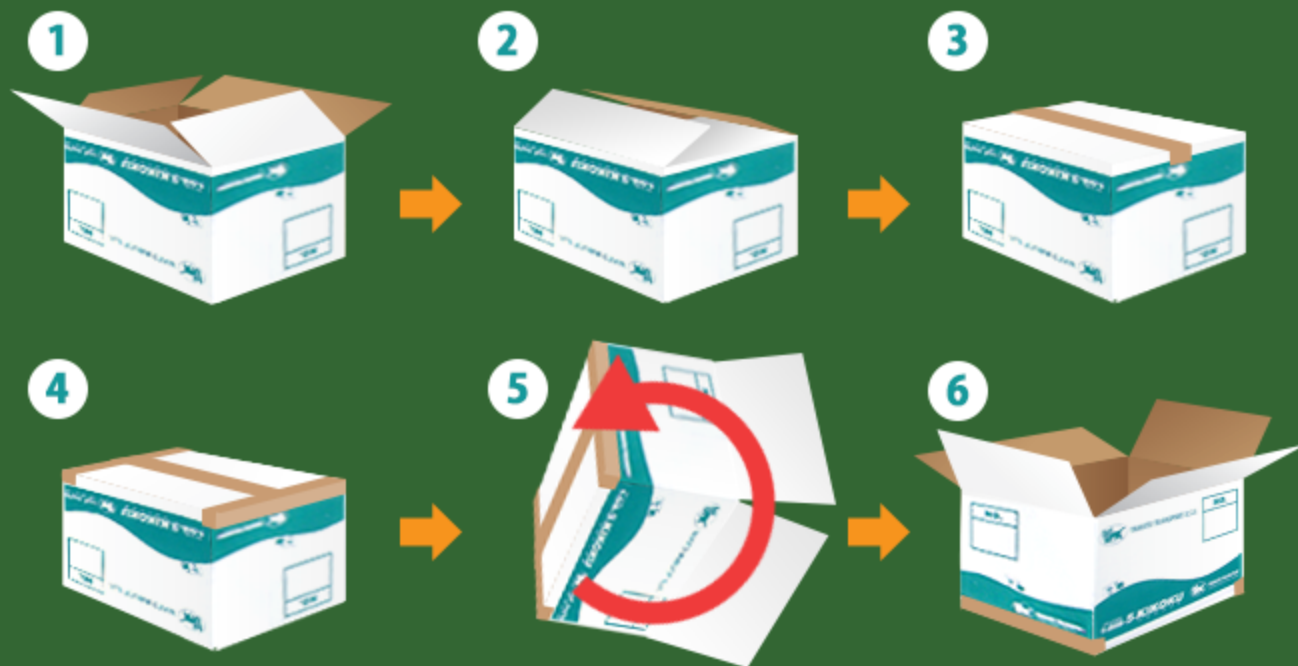


Do it yourself and save money! For smaller moves, you can use the Tanshin Plan!

Tanshin Plan

MOVING LESSON STEP 07

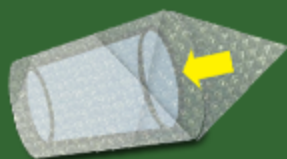
How to prepare a shipping box?
Lessons below!



Turn the box upside down, and tape the bottom part in the shape of a cross. For a stronger seal, an "X" shape makes the box stronger and more secure!

MOVING LESSON STEP 08

How to pack fragile items:



Glasses and Cups

Roll paper around the glass, folding the remaining paper into the glass or cup.



Mugs

Roll the paper over the handle first, and then around the entire mug. Fold the remaining paper into the interior of the mug.



Teapots

Cover the cap with bubble wrap. Cover the spout and handle with bubble wrap. Put the cap upside down on the teapot, and then cover the whole teapot with more bubble wrap and tape!



If you need help packing, please leave the job to us! Yamato offers packing services too!

MOVING LESSON STEP 09

How to Pack Your Personal Goods.



Make a note of what you have in each box. This is important, as Yamato will create a packing list for you from your list.

Please put old towels or newspaper in the spaces between your items.

The total weight of each box cannot exceed 55 lbs. or 25 kgs.

Please number your boxes on the top and sides so that both you and Yamato can distinguish the boxes and what is in each box.



Dad's winter Clothes

It is very helpful to put a descriptive label, like "Dad's Winter Clothes" so you can easily find what you need when you unpack.



If your box is too full, or makes a noise when you move or shake it, something could be broken in transit. Check your boxes and correct the problem before shipping!

MOVING LESSON STEP 10

How to Make Your Moving Easier.

Make a decision about where you want the items to go in your new home before they arrive.



Suits will go in the bedroom



Coats, jackets and ski clothing should be in the closet – plan for the season of your move!



Dad's winter Clothes

List content on the outside of the box

Good: Clothes
Better: Dad's Clothes
Best: Dad's Winter Clothes



Dishes, spices and pots and pans go to the kitchen.

Note: Save yourself from confusion and write "Use Immediately" or "Seasonal Items" on the boxes you will need right away. This makes unpacking easier and more efficient.



Yamato make a list of your valuables, but please write down everything for yourself as well.



Make sure you write "FRAGILE" on the boxes that have breakable or valuable items!

MOVING LESSON Common Mistakes

Be careful when packing. Look at some of the common mistakes that have really happened:



Passport

Don't pack it in a box!



Garage Door Opener

Don't sell the car with the garage door opener still in it!



Shoes

Oh no! We packed all of our shoes!



TV Remote Control

Oh no, I packed the remote that belongs to the cable company!

Use the Checklist to review your moving steps.



Relax and give yourself plenty of time to prepare. Double check everything, including what you bring yourself and what you will ship. Keep a list!

MOVING LESSON STEP 11

Pick-Up Day

We call before we arrive to your home. If you have questions, ask us! We are ready to help you with any concerns.



We do high quality packing and loading.



We make a list as we pack.



Caution! If there is any accidental breakage, the declared amount you have stated will be the maximum amount payable from insurance.

Moving Lesson STEP 12

Unaccompanied Baggage Declaration is Necessary in Japan.

Please ensure that you declare unaccompanied baggage when you enter Japan.

- 1 Prepare two sets of Customs Declaration Forms.
- 2 Hand both sets to the Customs Agent at the airport when you arrive. They will stamp one form and hand you back one set.
- 3 Hand this stamped form to the person at the Yamato window at the airport.

※Please send to the Yamato address if you forget to hand it to the Yamato agent at the airport.

Address to send form:□

〒282-0021 Yamato Logistics Co., Ltd. Narita Seikatsu Sien Operation Center, Besso Dept.
312 Dai 2 Kamotsu Dairiten Building, 2091 Dainoda, Komaino, Narita-shi, Chiba-ken

Necessary Documents to Send Yamato:

- 1) Stamped Customs Form
- 2) Copy of your passport (the ID page, Visa page, and Stamp page)



Additional charges may apply if you fail to declare unaccompanied baggage when you enter Japan, so be careful!

MOVING LESSON STEP 13

Transportation of your items.

Dispatch Operation



Air Transport



Ocean Transport

Import Customs clearance



..... All of your items are transported by Yamato Group



All of your items are transported by Yamato Group.

MOVING LESSON STEP 14

Delivery in Japan.

Yamato Japan staff will contact you to confirm the delivery date and address.



We deliver the boxes to your requested room you request.
Unpack and assemble your furniture.

MOVING LESSON Final

How was it?

The most important thing for a successful move is detailed preparation, high quality and, reliable operations. The staff at Yamato Transportation USA are highly trained a valuable moving experience to help your move as easy and smooth as possible.

▶ ***Rakuraku Pack***

▶ ***TANSHIN Plan***



Questions? Contact us.

